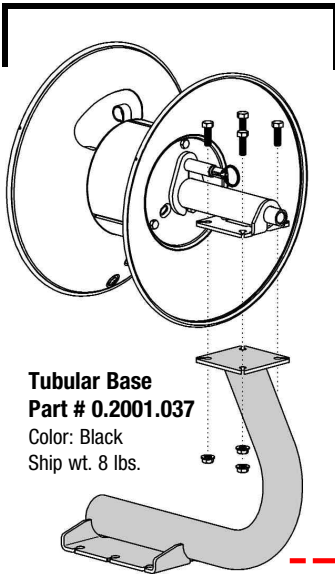


"Bolt-on" Mounting Options for 4400 Series Reels

Tubular Base Mounting

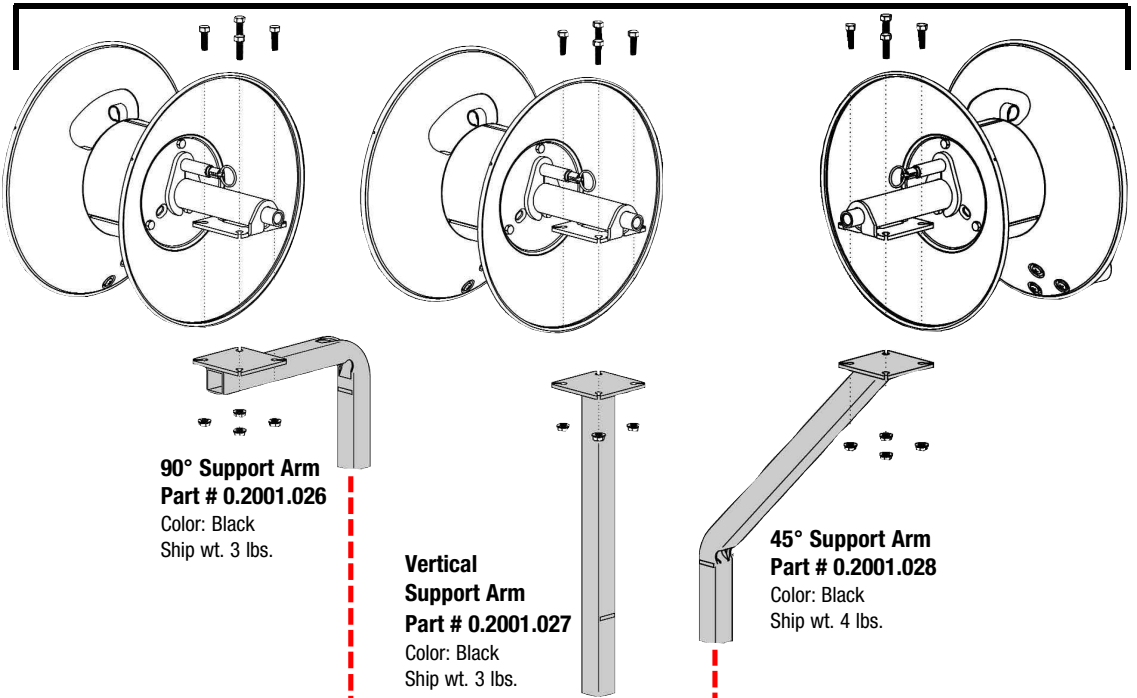
Delivers incredible strength and rugged durability for extreme applications such as trailer and vehicle mountings as well as traditional wall mountings.



Tubular Base
Part # 0.2001.037
Color: Black
Ship wt. 8 lbs.

Support Arm Mountings

Three support arms, (and subsequent brackets), will help mount a 4400 series reel to the frame of a portable power washer with ease. First, select a support arm and bolt it to the reel. This combo unit then slides into the square tube "receiving socket" on one of four mounting brackets. This same type of square tube socket is also "built-in" to the frames of numerous power washers. Check with your local power washer dealer to see if their brand comes equipped with this "built-in" socket.

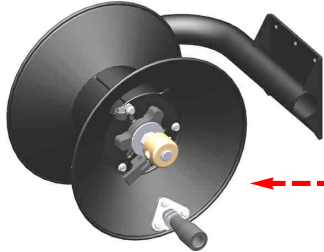


90° Support Arm
Part # 0.2001.026
Color: Black
Ship wt. 3 lbs.

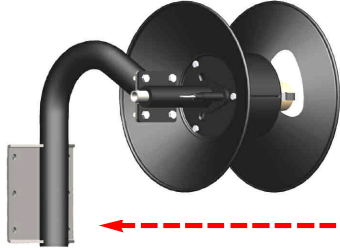
Vertical Support Arm
Part # 0.2001.027
Color: Black
Ship wt. 3 lbs.

45° Support Arm
Part # 0.2001.028
Color: Black
Ship wt. 4 lbs.

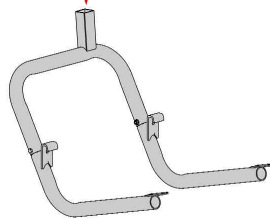
Horizontal Wall Mounting



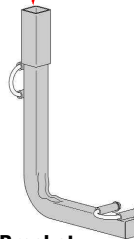
Vertical Wall Mounting



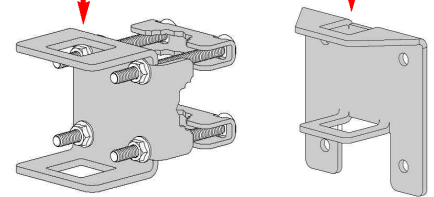
Trailer & Vehicle Mounting



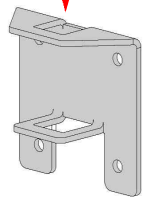
Bracket for Karcher
Part # 0.2001.090
Mounts to full size HDS Karcher® washers. **Used with vertical arm.**



L-Bracket
Part # 0.2001.006
For various Landa® and Mi-T-M® washer frames. **Used with 45° arm.**



Universal Bracket
Part # 0.2001.100
Used for mounting to the frames of portable pressure washers, it clamps onto any **vertical or horizontal** round pipe, square tube or angle iron frame up to 1-3/4" in size.



Wall Bracket
Part # 0.2001.003
Mounts to any solid vertical surface. Mounting holes are 3-3/8" center to center. **Not for use with the vertical support arm.**

