



# Mounting Options for 5500 Series Pivot Reels



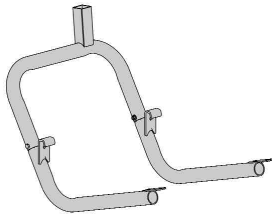
The patented design of these reels simply slide into the square tube "receiving socket" on one of four mounting brackets, or into a built-in socket found on numerous power washer frames. Check with your local power washer dealer to see if their brand comes equipped with this built-in socket.

## NOTE:

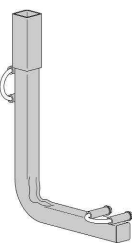
Models 5513 and 5516 are **NOT** designed for trailer or vehicle mounting and is **NOT** recommended for those applications. Instead, use the 4400 series with the 2001.037 Tubular Base.

### Quick-Attach Socket Feature

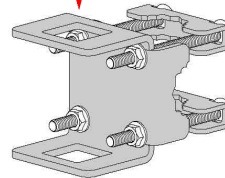
Allows reel to be mounted to, (or removed from), walls or portable pressure washer frames in just seconds! Rapid Reel's mounting brackets enable quick installation to the frames of many major pressure washer brands.



**Bracket for Karcher**  
Part # 0.2001.090  
Mounts to full size HDS Karcher® washers.

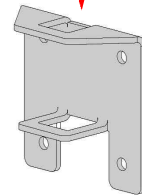


**L-Bracket**  
Part # 0.2001.006  
For various Landa® and Mi-T-M® washer frames.



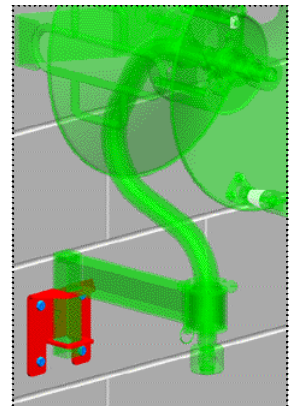
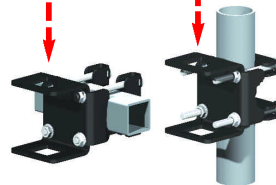
**Universal Bracket**  
Part # 0.2001.100

Used for mounting to the frames of portable pressure washers, it clamps onto any **vertical or horizontal** round pipe, square tube or angle iron frame up to 1-3/4" in size.



**Wall Bracket**  
Part # 0.2001.003

Mounts to any solid vertical surface. Mounting holes are 3-3/8" center to center both directions. Mounting hardware not included.



Example of Universal Bracket mounted to round vertical frame of portable hot power washer.